

CLUB

ISSUE 15 | CLUB KAWASAKI MEMBERS MAGAZINE

WWW.CLUB-KAWASAKI.CO.UK

Kawasaki





WELCOME

ISSUE_15 MEMBERS MAGAZINE



Welcome to issue number 15 of Club Kawasaki Magazine. We're so proud to continue to bring you the exclusive content you're not able to find anywhere else. With the impressive number of successes from last year, we're already starting to build on those and make this year even bigger and better.

Find out where you can catch up with the Kawasaki team this season and see our new event truck around the UK at dealer days, national events and Kawasaki shows. Our events list will give you all the details you need and you can keep up to date with the dedicated events section of the Club website too.

You are probably aware that Kawasaki is involved with much more than just motorcycles, but do you know the extent of the projects Kawasaki Heavy Industries have been involved with and the continual development taking place across the globe? Discover all in our in-depth features which also delve into the world of Supercharged Technology.

We've interviewed Kawasaki racing experts to give you the low down on the upcoming season, development

and history so you can become the expert and seriously impress with your knowledge. Go behind the scenes and hear from Kawasaki UK Senior Racing Coordinator in our staff insight feature.

If you're a new member, you're here at a great time and have the opportunity to get involved with all of the Club activity happening. Whether you need an excuse to get out on your bike with the Club Challenge, you want to chat to other Kawasaki fans on the Club online forum or you want to make the most of the Club offers and discounts – the best way to make the most of your membership is to get involved with everything!

As always, we want to hear your feedback. We're always making changes and decisions about your club and the only way we can continue to offer you what you want, is if you tell us what that is. Whether you want to pick up the phone, drop us an email, send us a message or post on the forum – we're here to listen and we want to hear what you have to say.

Get stuck in and enjoy!

Eleanor

Eleanor Berry | Editor

Editor:
Eleanor Berry

Designer:
Marcus Broughton

Exclusive Content:
Martin Lambert

Contributors:
Ross Burridge, Andrew Drake,
Victoria Ward

Thanks to: Rick Brett, KHI, Chris Walker, Ian Wheeler, Michael Batholemy, Yoshimoto Matsuda

Photography: KHI, KME, KMUK, Double Red, Nuno Larawjeira, Graeme Brown, Martin Lambert, Tim Keaton

Published by Kawasaki Motors UK
www.kawasaki.co.uk

Printed by Mortons Publishing

Membership
www.club-kawasaki.co.uk



©2018 Kawasaki Motors UK.
All rights reserved. No part of this magazine may be used or reproduced without the written permission of the publisher. All information contained within this magazine is for information only and is, as far as we are aware, correct at the time of going to press. Kawasaki Motors UK cannot accept any responsibility for errors or inaccuracies in such information.

CONTENTS



P09



P12



P16



P26



P31

09 THE KHI STORY

The worldwide technology and engineering conglomerate that is Kawasaki Heavy Industries.

12 UNDER PRESSURE

Kawasaki joined the Supercharged party with the Ninja H2 & H2R and now the H2 SX but are they under pressure for more.

16 ENDLESS POSSIBILITIES

The Z900RS Akashi design was born out of the concept of an endless amount of possibilities.

26 NINJA SPIRIT

Yoshimoto Matsuda tells us in his own words why Ninja spirit is needed now more than ever.

31 MOTO GP

The Kawasaki MotoGP project was initiated in December 2001, the ZX-RR project was so close, yet so far.

38 CLUB CHALLENGE

Join the Challenge, visit iconic locations, meet new friends and meet up with old ones - while gaining points towards prizes.

42 ROCKING THE CBT

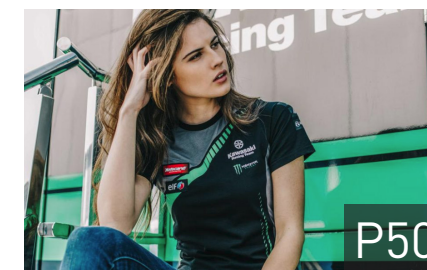
Absolute Radio DJ and mother Leona Graham takes on her CBT with Kawasaki Rider Training Services.

50 KAWASAKI CLOTHING

Get ready for that trip of a lifetime with our top picks from the Kawasaki clothing & accessories range.



P38



P50



CATCH UP WITH KAWASAKI MOTORS

Finance offers available until 30 June 2018

Ride away on a brand-new Kawasaki for less than you may think with a range of HP and PCP package available. Customers can tailor the offer that suits them by logging onto Kawasaki Calculator and selecting their chosen model, accessories and available deposit to determine the monthly repayments. They can then send their final choice direct to their local dealer or simply print it out and take it to the dealer themselves.



More models available with 0% APR finance for three years

We are pleased to announce an exciting addition to our retail finance offer. The Ninja 400 is now available on 3 years 0% HP finance. Available with 0% APR over three years on HP until 30th June 2018 are the #RefinedRaw Z650, Z900 and sporty Ninja 650 & Ninja 400, now is the perfect time to finance your dream Kawasaki. Also included in this offer are the Versys-X 300, Versys 650 and new Z900 70kW. Touring and Performance versions are also available on this finance offer. Other models already available are the Vulcans S, J125/300 plus the SL family: Ninja 250SL and Z250SL.



5.9% APR Representative Personal Contract Purchase (PCP)

The PCP offers from last year have been extended meaning all road bikes over 300cc, including the Ninja ZX-10R and powerful ZZR1400, are available at 5.9% APR Representative until the end of June 2018. The new Z900RS is also available on 5.9% APR, with the Ninja H2 SX and Ninja ZX-10R SE becoming available when they land in dealerships from June 2018.

Compared to arranging finance through a bank or building society, arranging finance through Kawasaki Finance is a simpler, shorter application process – so you swiftly get the keys to your dream Kawasaki.

Visit www.kawasaki-calculator.co.uk or find your nearest Kawasaki dealer to obtain a personalised quote.

Credit is subject to status and is only available to UK residents aged 18 and over. Finance offer available through Kawasaki Finance, a trading style of Black Horse Ltd, St William House, Tresillian Terrace, Cardiff, CF10 5BH. Finance offer ends 30/06/2018.

Derby Kawasaki Celebrate Opening

Opened in January this year, Derby Kawasaki has continued to build on Moby Dicks' reputation for providing quality advice, great value and unrivalled customer service which dates back to 1999. Derby Kawasaki now offers a huge range of new and used Kawasaki motorbikes to customers across Derby, Nottinghamshire, and Leicestershire.

On 02 January 2018, 'Moby Dicks' decided to sprinkle their services with a bit of green sugar and launch an exclusive Kawasaki dealership, with the Dealer Principle, Richard Hulland, describing it as "a massive ambition and now a huge honour".

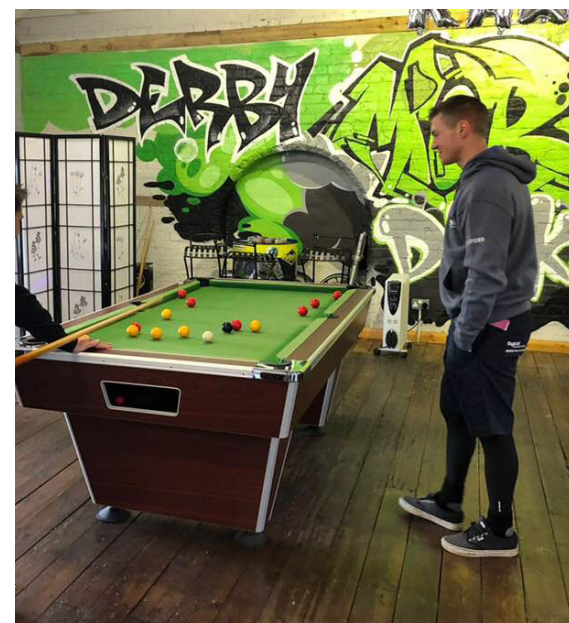


Derby Kawasaki also offer servicing, MOT tests, repairs if needed alongside their extensive range of new and used motorbikes for sale. A dedicated workshop, with the sole purpose of providing motorbike mechanic services, ensures high quality work as quickly as possible.

A range of Kawasaki clothing, genuine products and accessories is available in the shop. This selection includes motorcycle helmets, jackets, boots and anything else that you can think of when it comes to your motorcycle clothing and accessory needs.

An exciting VIP lounge is located on the upper floor and is equipped with pool table, table football, bar and refreshments. The perfect break in your weekend ride or an ideal location to wait while your bike is serviced.

Visit the dealership to meet Richard and the team, and experience everything the dealership has to offer.



Kawasaki Win Motorcycle Live Best Manufacturer Stand

Over 100,000 people visited the 2017 Motorcycle Live show and you would have been unlikely to miss the larger than life Kawasaki dealership which was built inside hall three to showcase the latest range of road and off-road models for the first time in the UK.

Based around the concept of the ultimate Kawasaki showroom and to give visitors a feel of what they can expect from a Kawasaki dealership, the stand featured a retro area to house the new 'Modern Classic' category of models including the Z900RS range. Moving over to the futuristic area, you found the supercharged family of Ninja's and Kawasaki's 'Supersport' range. Elsewhere, visitors were able to get up close and personal with the new Ninja 400 and 70kW Z900.

The race area outside of the dealership showed off a wide range of race and championship winning bikes including Jonathan Rea's WorldSBK winning ZX-10RR, Leon Haslam's JG Speedfit ZX-10RR, Dean Harrison's classic TT-winning ZXR750 and Danny Buchan's National Superstock 1000 Championship winning Morello Racing Kawasaki Ninja ZX-10RR.



It seems visitors were impressed by Kawasaki's efforts at Motorcycle Live as Kawasaki won the award for "Best Manufacturer Stand" which is voted for by the public and even the organisers could see that something new was evolving.

Finlay McAllen, Motorcycle Live MCI Exhibitions "I have to say that from the outset during build-up, it was evident that we were about to witness something very different from anything we've seen before, which was underlined when we opened on Saturday morning and you actually took a walk in and around the space."

Motorcycle Live 2018 will take place at The NEC, Birmingham from 17-25 November – save the date!





13th May - 19th May
NW200 - Northern Ireland



19th May - 20th May
MCN Festival of Motorcycling - Peterborough, England
Test rides, live action, biking bargains, stunts and more.



25th - 27th May
World Superbikes - Donington Park
Join Club Kawasaki hospitality on race day with a meet and greet from the KRT team.



26th May - 8th June
IOM TT - Isle of Man



2nd June - 3rd June
Seastar Superbikes Open Weekend - Newton Flotman, England



15th June - 17th June
British Superbike Championship Round 4 - Snetterton
Get your great value weekend BSB tickets for all rounds from the Club Kawasaki online shop with the option to include race-day hospitality.



6th July - 8th July
British MX Championship Round 5 - Knockhill, Scotland



20th - 22nd July
British Superbike Championship Round 6 - Brands Hatch

21st - 22nd July
MCN Scottish Festival - Royal Highland Centre, Edinburgh
Two day event with biking, live entertainment and tribute bands.



2nd - 5th August
BBC Countryfile Live - Blenheim Palace
Packed with family friendly activities galore, food stalls, live arenas and animal shows and the Kawasaki stand.



3rd - 5th August
British Superbike Championship round 7 - Thruxton



5th - 11th August
Ulster Grand Prix - Northern Ireland

12th August
Brackley Festival of Motorcycling
Brackley High Street turns into an impressive motorcycle parade display and arena, visit Kawasaki at this event.

17th - 19th August
British Superbike Championship Round 8 - Cadwell Park

7th - 9th September
British Superbike Championship Round 9 - Silverstone

14th - 16th September
British Superbike Championship Round 10 - Oulton Park

28th - 30th September
British Superbike Championship Round 11 - Assen

7th October
Copdock Show - Ipswich
Colchester Kawasaki, Orwell Motorcycles and Seastar Superbikes are all attending this local motorbike show.

17th - 25th November
Motorcycle Live - NEC, Birmingham



BBC COUNTRYFILE LIVE
BLENHEIM PALACE

2ND-5TH AUGUST



THIS YEARS
MUST ATTEND
EVENTS FOR
EVERYTHING
KAWASAKI



EVENTS

THE KAWASAKI
CALENDAR

2018



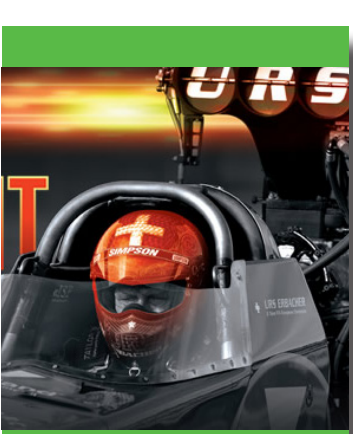
BRITISH MX GP

2ND-3RD JUNE MATTERLEY BASIN



BSB ROUND 12
BRANDS HATCH GP

12TH - 14TH OCTOBER



25TH-28TH
MAY

THE
MAIN
EVENT

SANTA POD
RACEWAY,
BEDFORDSHIRE



BRACKLEY FESTIVAL OF
MOTORCYCLING

12th AUGUST

MOTORCYCLE
LIVE



17TH- 25TH NOV

UNDER PRESSURE

WRITTEN BY MARTIN LAMBERT

Definition: A supercharger is an air compressor that increases the pressure or density of air supplied to an internal combustion engine. This gives each intake cycle of the engine more oxygen, letting it burn more fuel and do more work, thus increasing power.



Past Pressure

The common perception of a Supercharger is a device to increase power and performance. Ever since the classic "Blower" Bentleys of the 1930's and the Supermarine Spitfire fighter of WWII, the epithet Supercharged has conjured up images of high performance with little concession to any other aspect of the combustion cycle.

Kawasaki joined the party in recent years employing variations of the Roots type lobe supercharger in four stroke JetSki applications. Although bulky – and not really suitable for a motorcycle application – the hull cavity of the Ultra 300 was voluminous enough to cater for the physically large "blower". The result? A relatively small personal watercraft with something like 300 horsepower. Of

course being tuned for high power economy was not great but certainly better than the multi-cylinder two-stroke JetSkis that preceded it.

On two wheels, Kawasaki wowed the world with the introduction of the Ninja H2 and Ninja H2R in 2015. For these machines the nomenclature H2 was at the core of the design process. The look of the machines and the way they delivered their considerable performance was conceived to replicate the impact of the original 750cc two-stroke Mach IV of 1972, a machine that, for a time, was among the fastest accelerating (and most thirsty!) available.



Supercharged Research

What is not so widely known is that KHI sent a small team of people to the UK as part of the research process for the Ninja H2, to not only see perfect examples of the machine but also to speak to enthusiasts about the emotions attached to these iconic machines. The result was a road going H2 with an advanced trellis frame, single sided swinging-arm and integrated supercharger. Importantly, like the H2 of the 1970's with its "Banzai powerband", the four-stroke H2 has a very direct throttle action in so much that even the whiff of throttle brings instant acceleration. The Ninja H2R speaks for itself with a bench dyno figure of over 300 horsepower underlining perhaps that universal perception of Supercharger = Outrageous barely controlled power. Only KHI and a tiny clique of people knew that this was but one facet of a much larger approach

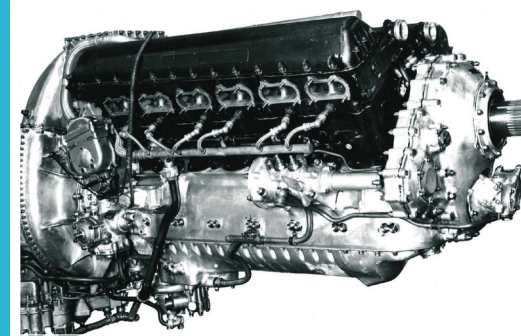
to forced induction technology. KHI was canny in developing the supercharger unit itself, fully in-house using knowledge from the aerospace and gas turbine divisions plus state of the art machining technology. Building a fund of internal knowledge about motorcycle supercharger applications led to such innovations as the ability to do away with a bulky intercooler and utilise planetary gears on the drive side, something which Kawasaki had considerable past knowledge of.



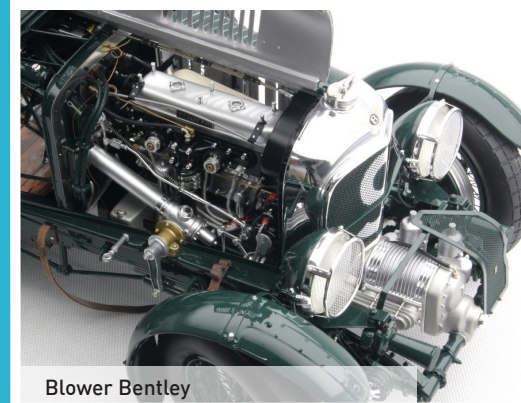
JetSki Supercharger



Supermarine Spitfire



Rolls Royce Merlin Engine



Blower Bentley